

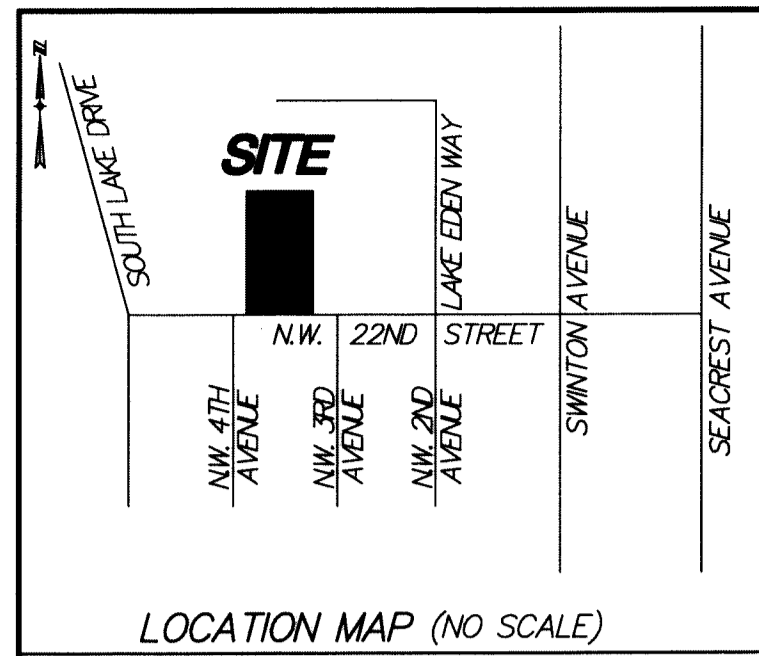
LAKE EDEN MANOR

BEING A REPLAT OF LOT 11, LAKE EDEN SUBDIVISION PLAT NO. 1, ACCORDING TO THE PLAT THEREOF AS RECORDED IN PLAT BOOK 28, PAGE 216 (P.R.P.B.CO.), BEING IN SECTION 5, TOWNSHIP 46 SOUTH, RANGE 43 EAST, CITY OF DELRAY BEACH, PALM BEACH COUNTY, FLORIDA

SHEET 2 OF 2

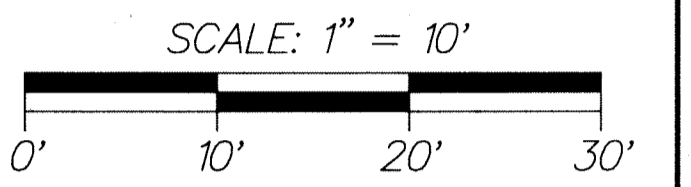
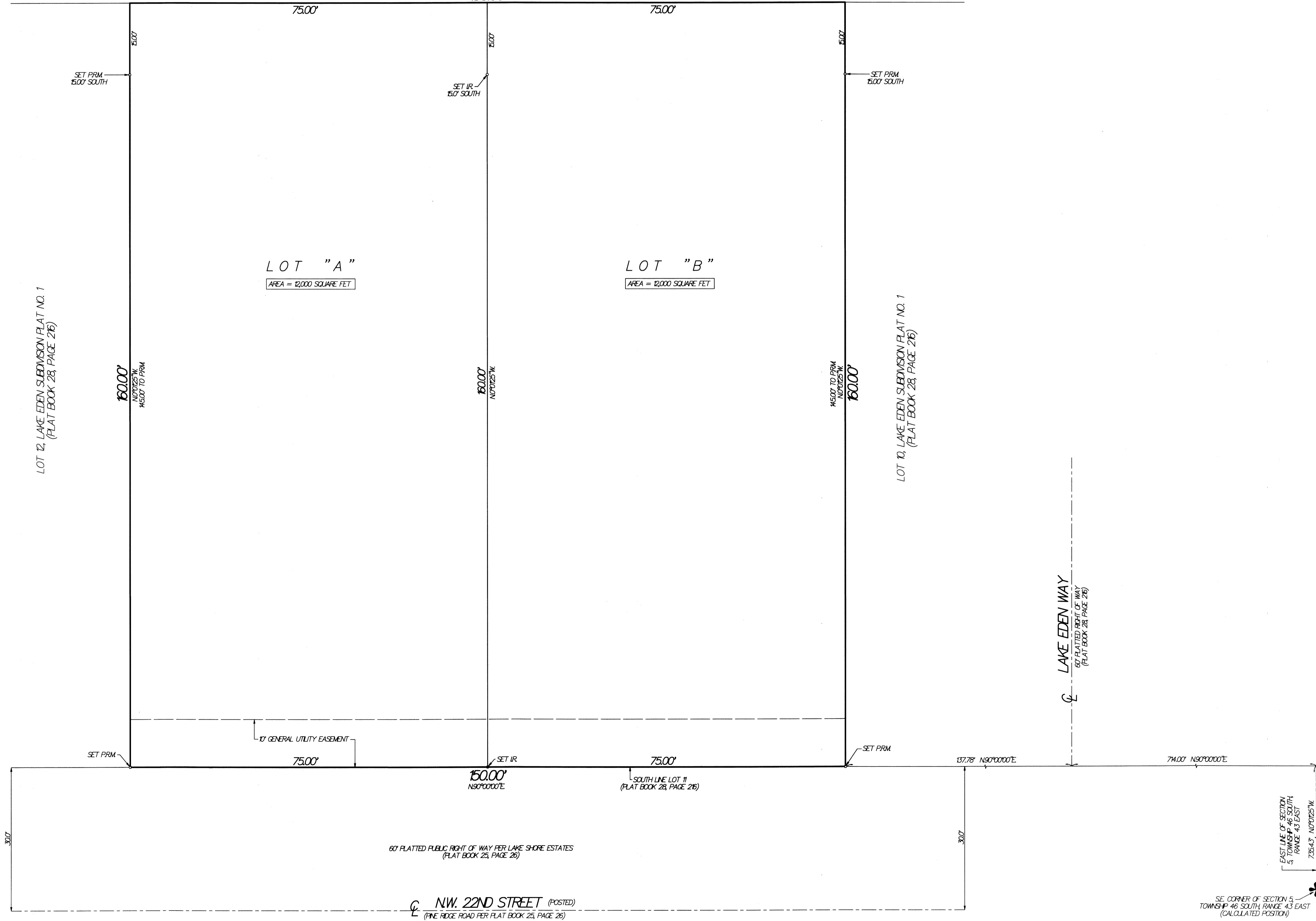
THIS INSTRUMENT WAS PREPARED BY PAUL D. ENGLE, IN THE OFFICE OF O'BRIEN SLITER & O'BRIEN, INC., 955 N.W. 17TH AVENUE, SUITE K-1, DELRAY BEACH, FLORIDA 33445 (561) 276-4501

192



NOT PLATTED
(LAKE)

N80°00'00"E
150.00'



- LEGEND:
- CL = CENTERLINE
 - PRM = PERMANENT REFERENCE MONUMENT (4" DIA. CONCRETE MONUMENT STAMPED "PRM LB353") UNLESS STATED OTHERWISE
 - P.R.P.B.CO. = PUBLIC RECORDS OF PALM BEACH COUNTY
 - SECTION 9/46/43 = SECTION 9, TOWNSHIP 46 SOUTH, RANGE 43 EAST
 - IR = 5/8" IRON ROD WITH CAP #LB 353

SE CORNER OF SECTION 5, TOWNSHIP 46 SOUTH, RANGE 43 EAST (CALCULATED POSITION)